

BLOCK 17, PLAT C  
CHAMBERLIN'S SUBDIVISION

OF LOTS 3-5 & 7-10

IN OGDEN CITY

SCALE 1" = 50'

TAXING UNIT: 25

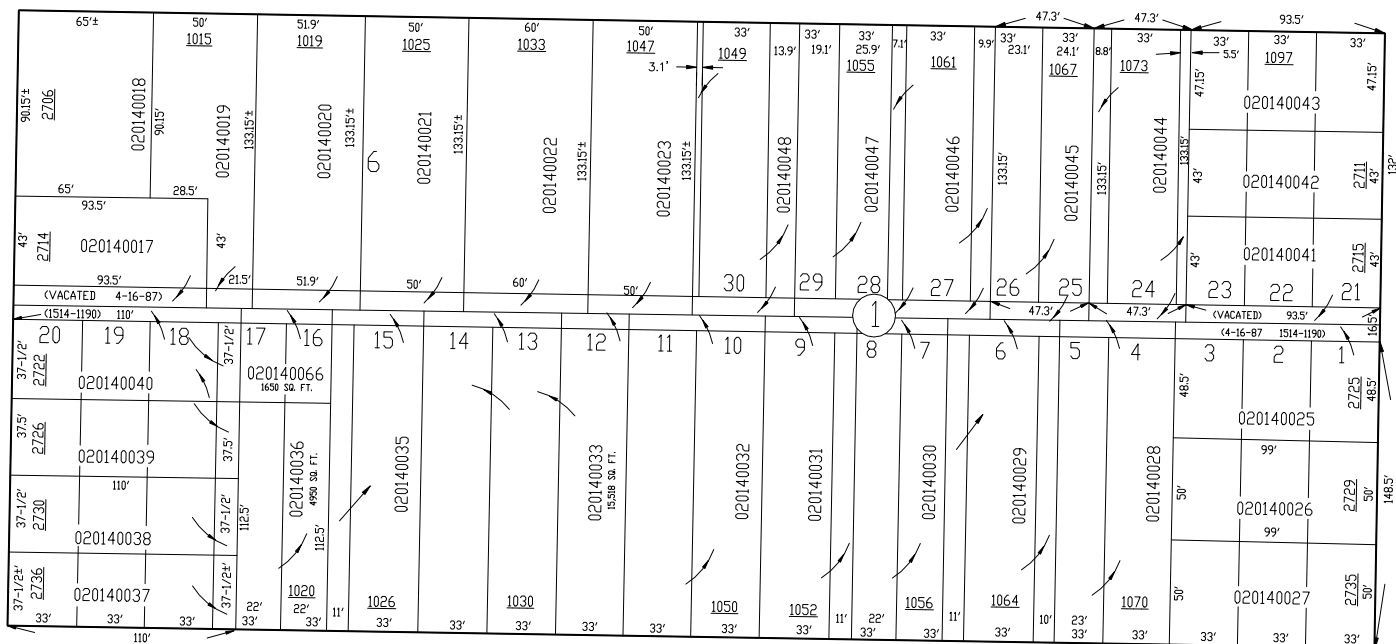
27TH

SEE PAGE 20

STREET

SEE PAGE 13

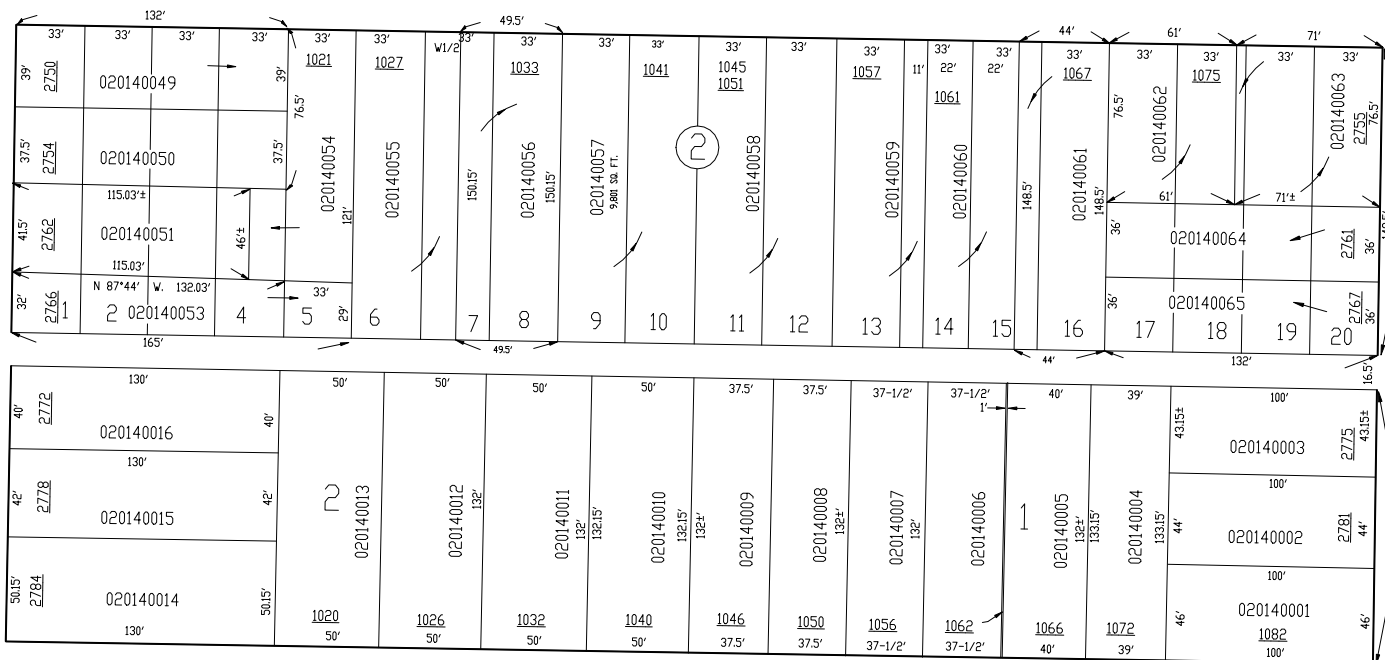
AVENUE



DOXEY

STREET

JACKSON



SEE PAGE 15

AVN BUREN

28TH

SEE PAGE 9

STREET

FOR COMPLETE ENG DATA SEE  
ORIGINAL DEDICATION PLAT IN  
BOOK 5, PAGE 6 OF RECORDS.